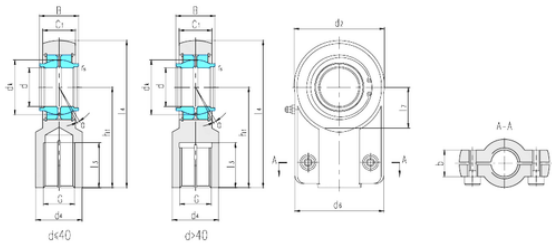




AMERICAN NTN BEARING LTD



LS SIGEW12ES plain bearing

Bearing No. SIGEW12ES

Bore Diameter	12 mm
d	12 mm
B	12 mm
b	15 mm
d2	32 mm
d4	16 mm
d6	32 mm
dk	18 mm
h1	38 mm
l3 min.	17 mm
l4 max.	54 mm
l7 min.	14 mm
r min.	0,3 mm
C1	11 mm
Thread (G)	M12 × 1,25
Angle	4 °
Weight	0,11 Kg
Basic dynamic load rating (C)	10 kN
Basic static load rating (C0)	24,5 kN

SIGEW12ES Bearing 2D drawings and 3D CAD models